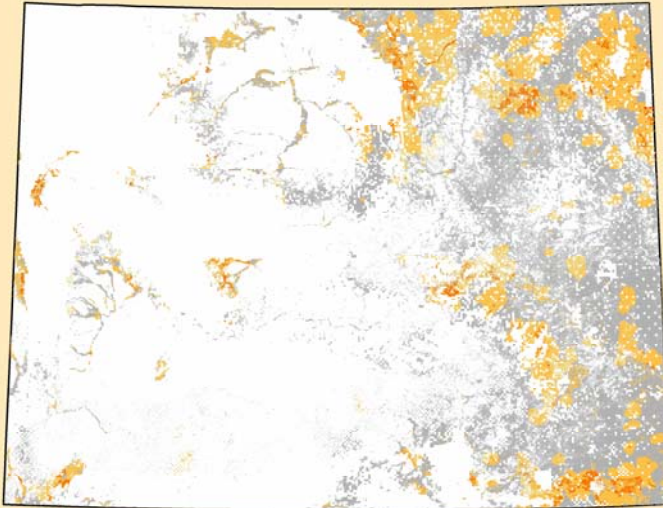


5



Resource Threats* Wyoming



Wyoming State Forestry Division
Bill Crapser, State Forester
Jim Arnold, Stewardship Coordinator

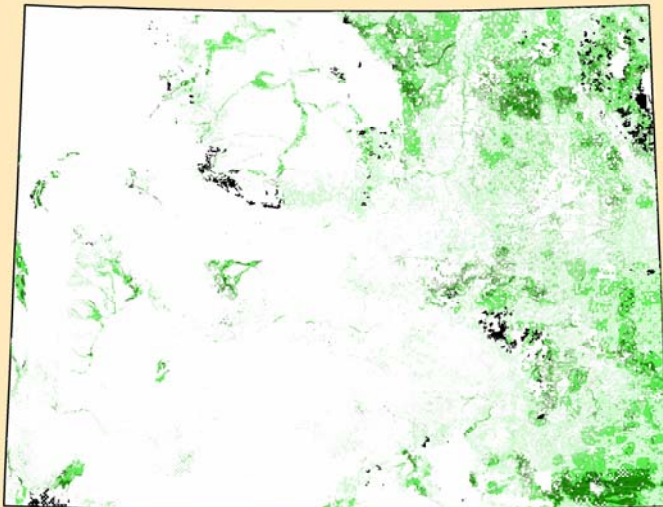


Map Notes:
Date: May 2007
Data Layer: resource_threats
File Name: Analysis_Map5.mxd
Map By: Shawn Lanning,
GIS Research Scientist, WyGISC

Contact Information:
Shawn Lanning, GIS Research Scientist
Wyoming Geographic Information Science Center
Dept. 4000, 1000 E. University Avenue
University of Wyoming, Laramie, WY 82071
502.551.0950

* Includes Data Themes:
Wildfire Assessment
Change in Households
Forest Pests

6



Forest Stewardship Potential on Non-Forested - Non-Developed* and Existing Stewardship Plans for Wyoming



Wyoming State Forestry Division
Bill Crapser, State Forester
Jim Arnold, Stewardship Coordinator



* Includes Classes of Land Cover
(MRLC):

- 31 Bare Rock / Sand / Clay
- 33 Transitional (Barren)
- 71 Grasslands / Herbaceous
- 81 Pasture / Hay
- 82 Row Crops
- 83 Small Grains
- 84 Fallow
- 85 Urban / Recreational Grasses
- 92 Emergent Herbaceous Wetlands



Map Notes:
Date: May 2007
Data Layer: stewardship_potential
File Name: Analysis_Map6.mxd
Map By: Shawn Lanning,
GIS Research Scientist, WyGISC

Contact Information:
Shawn Lanning, GIS Research Scientist
Wyoming Geographic Information Science Center
Dept. 4000, 1000 E. University Avenue
University of Wyoming, Laramie, WY 82071
502.551.0950

Non-forest - Non-developed Lands	Non-forest - Non-developed Land Stewardship Potential			Total
	Low	Medium	High	
Acres capable of Stewardship	6,553,473	4,971,927	1,711,969	13,237,370
Stewardship Plan acres	23,848	24,910	10,270	59,028
Stewardship Plan acres as a percent of acres non-forest - non-developed lands	0.36%	0.50%	0.60%	0.45%

